



**SuperStor Contender Solar Water Heaters  
with Boiler (SB Series) or Electric (SE Series) Back-Up**

**JOB NAME:**

**LOCATION:**

**ARCH./ENGR.:**

**WHOLESALE:**

**MECH. CONTRACTOR:**

**MODEL NUMBER:**

**BACK-UP WATER HEATING SYSTEM:**

**High Efficiency Solar Heat Exchanger**

- Specially formulated Enamel Flow Coated steel solar heat exchanger provides maximum heat transfer of solar energy to domestic water and corrosion resistance
- Low pressure drop
- Gasketless heat exchanger design
- 1" NPT solar heat exchanger outlet size – all models

**Glass-Lined Tank**

- Specially formulated Enamel Flow Coat guarantees 100% tank coverage, ensuring no exposed welds
- Insulated with environmentally safe, CFC free, water-blown, extra thick foam insulation.
- Allows less than 1/2 degree Fahrenheit per hour heat loss
- Outer shell constructed of grey finished durable plastic for rust and impact resistance
- 3/4" NPT inlet and outlet domestic connection size for 50 gallon models – 1 1/2" NPT for 80 and 119 gallon models
- Included temperature and pressure relief valve
- Surface mounted sensor for accurate current temperature measurement inside vessel

**SB Series Solar Water Heaters**

- Back-up Boiler Heat Exchanger – provides back-up water heating from the boiler if the solar system fails to keep up with domestic hot water demand
- Specially formulated Enamel Flow Coated steel heat exchanger provides maximum heat transfer of boiler energy to domestic water and corrosion resistance
- Gasketless heat exchanger design
- 1" NPT boiler heat exchanger outlet size – all models
- Tank mounted boiler thermostat to control back-up operation

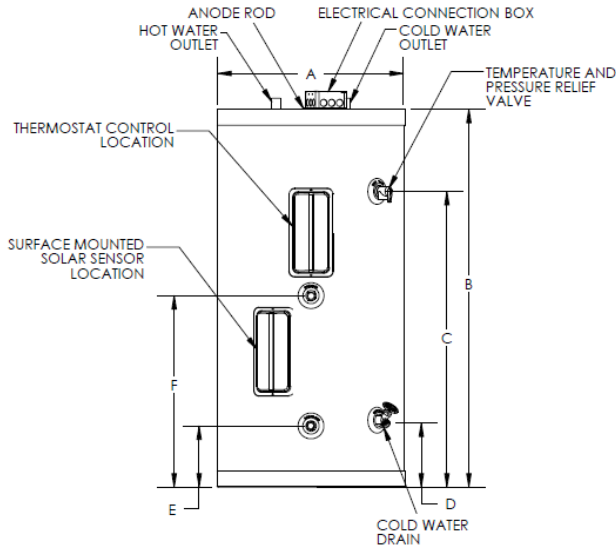
**SE Series Solar Water Heaters**

- Back-up Electric Element – 4500W / 240V electric element provides back-up water heating if solar system fails to keep up with domestic hot water demand
- Surface-mounted control provides accurate temperature measurement to timely activate the back-up electric element

**Additional Features**

- Oversized anode rod protects tank from corrosion
- Limited warranty – 7 years residential and 5 years commercial coverage
- SRCC OG-300 Certified – applies to Federal Tax Credit when connected to a solar collector
- May qualify for additional State and Local incentives – ask your installer for more information

## CONTENDERSE SERIES SOLAR WATER HEATER (with BACK-UP ELECTRIC ELEMENT)



LP-197  
04/21/11

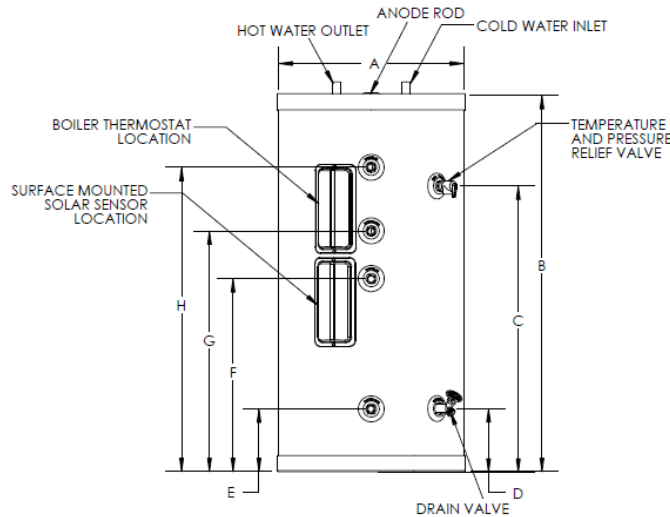
### CONTENDER SOLAR WATER HEATER DIMENSIONS & SPECS

MODEL #	GAL.	DIMENSIONS						HEAT EXCHANGER OUTLET SIZE	INLET/OUTLET SIZE	SHIPPING WEIGHT (lbs)
		A	B	C	D	E	F			
SSC-50SE	50	23"	46-1/2"	36-1/2"	8"	7-3/4"	23-1/2"	1" NPT	3/4" NPT	175
SSC-80SE	80	23"	71-1/2"	60-1/4"	8"	7-3/4"	33-1/2"	1" NPT	1-1/2" NPT	237
SSC-119SE	119	27"	64"	51"	10-1/2"	10"	27"	1" NPT	1-1/2" NPT	336

### CONTENDER SOLAR GLASS LINED SE SERIES

MODEL	SOLAR HX VOLUME GALLONS	HEATED WATER VOLUME OF BACK UP	RECOVERY OF BACK UP IN MINUTES		FIRST DRAW *	
			65 ° RISE	90 ° RISE	65 ° RISE	90 ° RISE
SSC-50SE	2 GAL	18 GAL	38 MIN	53 MIN	20 GAL	14 GAL
SSC-80SE	2 GAL	37 GAL	78MIN	108 MIN	38 GAL	26 GAL
SSC-119SE	2 GAL	67 GAL	141MIN	196 MIN	70 GAL	46 GAL

## CONTENDER SB SERIES SOLAR WATER HEATER (with BACK-UP HEAT EXCHANGER)



LP-198  
04/21/11

### CONTENDER SOLAR WATER HEATER DIMENSIONS & SPECS

MODEL #	GAL.	DIMENSIONS								HEAT EXCHANGER OUTLET SIZE	INLET/OUTLET SIZE	SHIPPING WEIGHT (lbs)
		A	B	C	D	E	F	G	H			
SSC-50SB	50	23"	46-1/2"	36-1/2"	8"	7-3/4"	23-1/2"	30"	37-3/4"	1" NPT	3/4" NPT	187
SSC-80SB	80	23"	71-1/2"	60-1/4"	8"	7-3/4"	33-1/2"	43"	55-1/2"	1" NPT	1-1/2" NPT	286
SSC-119SB	119	27"	64"	51"	10-1/2"	10"	27"	36"	47-1/4"	1" NPT	1-1/2" NPT	367

### CONTENDER GLASS LINED SOLAR SB SERIES

MODEL	HX VOLUME GALLONS		HEATED WATER VOLUME OF BACK UP	RECOVERY OF BACK UP IN MINUTES		BOILER OUTPUT FOR TEST RECOVERY	FIRST DRAW*	
	SOLAR	BOILER		65 ° RISE	90 ° RISE		65 ° RISE	90 ° RISE
SSC-50SB	2 GAL	1.5 GAL	18 GAL	12 MIN	17 MIN	80,000 BTU/HR	20 GAL	14 GAL
SSC-80SB	2 GAL	1.5 GAL	37 GAL	17 MIN	24 MIN	90,000 BTU/HR	38 GAL	26 GAL
SSC-119B	2 GAL	1.5 GAL	67 GAL	22 MIN	31 MIN	100,000 BTU/HR	70 GAL	46 GAL

\* AMOUNT OF WATER DRAWN OUT OF STORAGE TANK WITHOUT ANY ENERGY INPUT

ALL DIMENSIONS ARE APPROXIMATE

Heat Transfer reserves the right to make product changes or updates without notice.  
Heat Transfer will not be held liable for typographical errors in literature.  
For questions, please consult the factory.