



## MC Series<sup>™</sup> Wall Mounted Condensing Heater Submittal Sheet

**JOB NAME:**

**LOCATION:**

**ARCH./ENGR.:**

**WHOLESALE:**

**MECH. CONTRACTOR:**

**MODEL NUMBER:**

**TYPE OF GAS:**

**BTU/HR INPUT LOW FIRE:**

**BTU/HR INPUT HIGH FIRE:**

**NOTES:**

### Heat Exchanger

- Gasketless heat exchanger design
- 30 PSI relief valve
- Removable front cover to access the combustion chamber and burner
- Inlet and outlet temperature sensor

### Combustion System

- Modulating burner with 3 to 1 turndown
- Up to .95 EF/93% AFUE
- High grade inconel burner design
- Direct spark ignition
- Models available for Natural or LP gas
- Dual flame monitoring (spark and flame probe)

### Integrated Control System

- Digital operating control with LED display and indicators for system pump – heater pump – DHW pump – system fault – system operation
- Outdoor reset with indirect priority

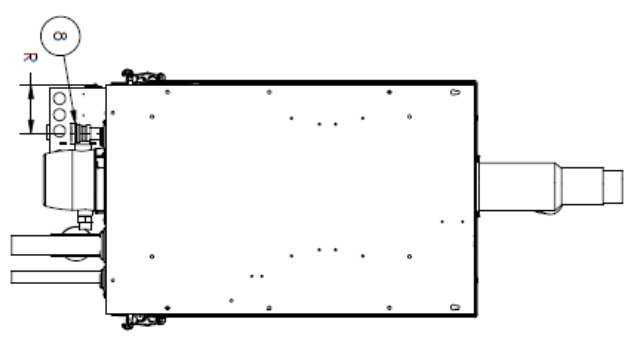
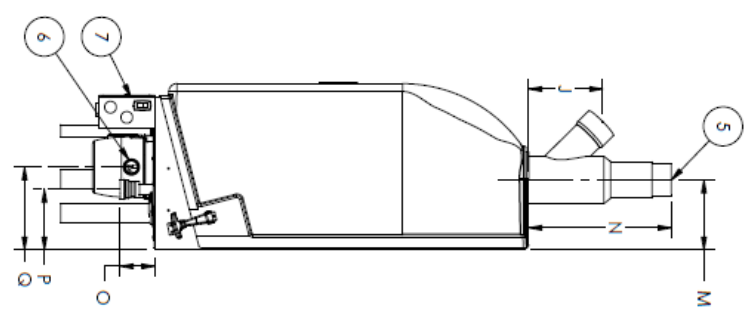
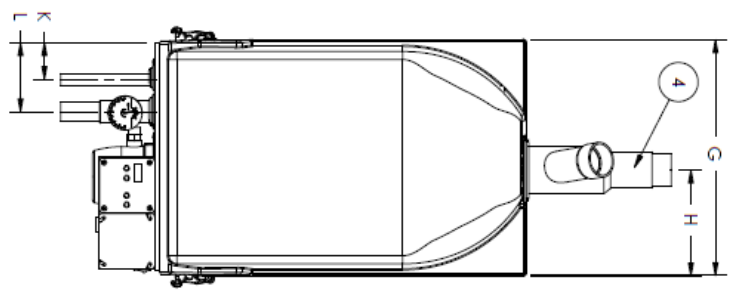
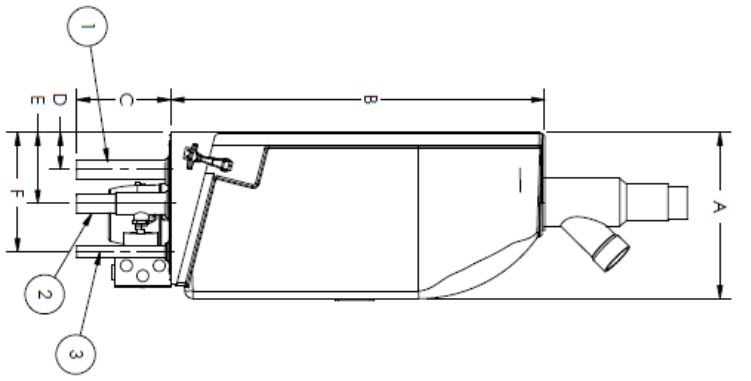
### Additional Features

- Superior condensate collection system with float switch
- Vents up to 85 equivalent feet (combined intake and exhaust)
- Vents in plastic, PVC - CPVC - stainless steel
- 12 year limited warranty
- Optional wall mount allows boilers for space saving
- A/C convenience receptacle for condensate pump
- High temperature limit w/ manual reset
- Dry contact for alarm output

### Optional Equipment

- Vision 1 – Outdoor Sensing (Part # 7250P-319)
- Indirect / Tank Sensor (Part # 7250P-325)
- Outdoor Sensor (Part # 7250P-319)
- Wall Mounting Kit (Part # 7450P-211)
- U.L. 353 Compliant Low Water Cut-Off Interface Kit w/ Manual Reset (Part # 7450P-225)
- 2” Stainless Steel Outside Termination Vent Kit (Part # V500)
- 2” Concentric Vent Kit (Part # KGAVT050/CVT)
- Alarm System (Part # 7350P-602) to monitor any failure
- Condensate Neutralizer (Part # 7350P-212)
- Condensate Pump (Part # 554200)

- 1 SYSTEM RETURN
- 2 SYSTEM SUPPLY
- 3 SYSTEM RELIEF
- 4 COMBUSTION AIR INLET CONNECTION
- 5 EXHAUST VENT CONNECTION
- 6 CONDENSATE CUP/DRAIN ASSEMBLY
- 7 ELECTRICAL BOX/CONTROL PANEL
- 8 GAS LINE CONNECTION



HEATER DIMENSIONS AND SPECIFICATIONS

MODEL NUMBER	BTU/HR INPUT LOW FIRE	BTU/HR INPUT HIGH FIRE	A	B	C	D	E	F	G	H	J	K	L	M	N	O	P	Q	R	VENT SIZE	SYSTEM RELIEF PIPE SIZE	SUPPLY/RETURN PIPE SIZE	GAS LINE CONN.	HEATER WATER VOLUME	ENERGY FACTOR EF	APPROX SHIPPING WEIGHT
MC50	18,000	50,000	12.50	27.50	7.00	2.75	5.25	9.00	17.25	7.75	5.50	2.75	5.25	5.00	9.00	2.75	4.00	6.50	4.00	2.00	.75	1.25	.75	.58	.93	71 LBS
MC80	19,000	80,000	12.50	27.50	7.00	2.75	5.25	9.00	17.25	7.75	5.50	2.75	5.25	5.00	9.00	2.75	5.25	6.50	4.00	2.00	.75	1.25	.75	.67	.93	74 LBS
MC99	44,000	99,000	13.50	27.50	7.00	2.75	6.50	10.25	17.25	7.75	5.50	2.75	5.25	6.00	9.00	2.75	7.75	6.50	4.00	2.00	.75	1.25	.75	.96	.95	84 LBS
MC120	44,000	120,000	13.50	27.50	7.00	2.75	6.50	10.25	17.25	7.75	5.50	2.75	5.25	6.00	9.00	2.75	7.75	6.50	4.00	2.00	.75	1.25	.75	.96	.95	84 LBS

1 Tested by Heat Transfer Products to the ANSI/ASHRA Standard 103.  
 2 Tested by Heat Transfer Products to the ANSI/ASHRAE Standard 103 with 90° return and 110° supply water.  
 LP-171-8  
 07/01/10