



Versa-Hydro Solar Combination Hydronic Appliance

JOB NAME:

LOCATION:

ARCH./ENGR.:

WHOLESALER:

MECH. CONTRACTOR:

MODEL NUMBER:

TYPE OF GAS:

BTU/HR INPUT:

NOTES:

Tank/Combustion Heat Exchanger

- Storage Tank 316L Stainless Steel Construction
- 90/10 Copper Nickel Heat Exchanger
- Front service access to combustion chamber and burner

Combustion System

- Modulating burner based on heat demand
- Up to 5 to 1 turn down ratio
- 96% Thermal Efficiency (All Models)
- 98% Combustion Efficiency
- High Grade Inconel Burner
- Spark Ignition
- Models Available for Natural or LP Gas

Hydronic Heating Module

- Pre-Plumbed Hydronic Module with Brazed Plate Heat Exchanger.
- System Line Connection of 1" NPT
- Working System Pressure of 15 PSI
- Pressure Relief Valve designed to relieve pressure Greater than 30 PSI (Higher relief valve capacities Available)

Control System

- Total System Control – Monitors Outdoor Temperature -Tank Temperature and Heating Module Outlet Temperature to match system design
- Password Protected
- Outdoor reset with Indirect Priority
- Modulating Pump Control on Heating Module
- 24 Volt monitoring

Solar System

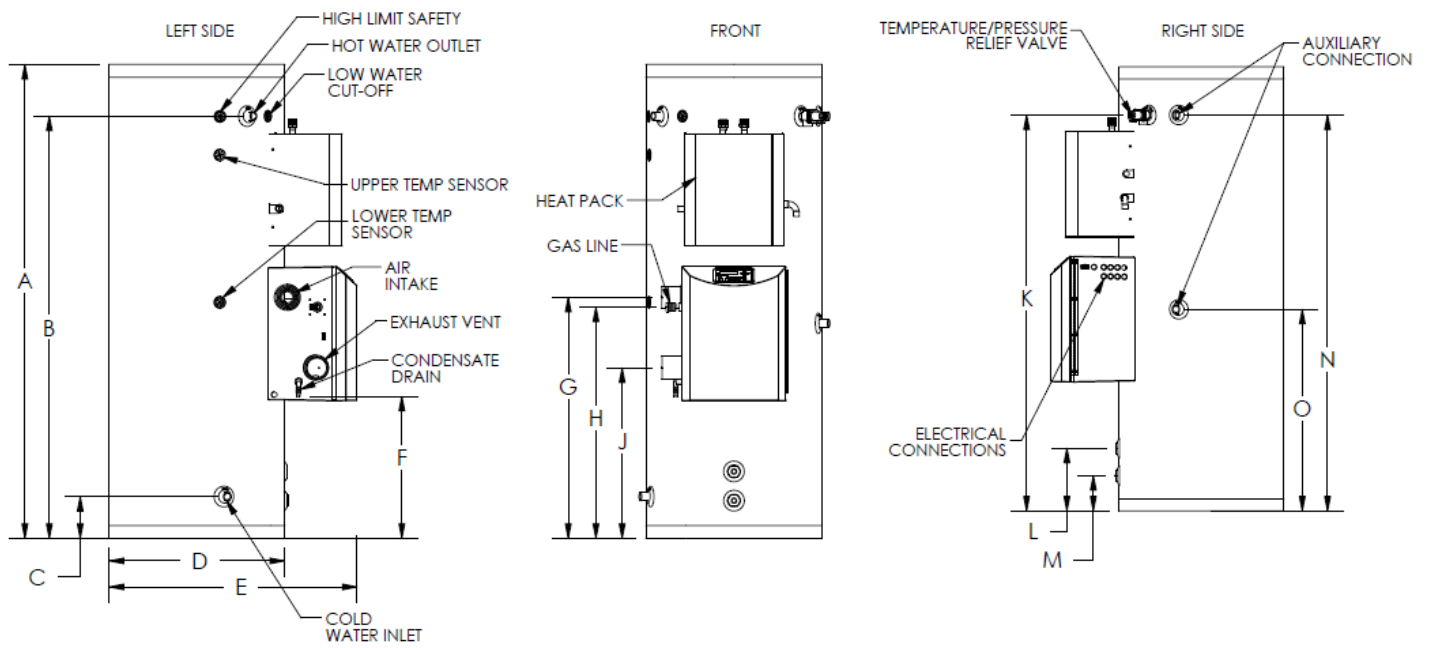
- Additional Solar Heat Exchanger

Additional Features

- Built in Condensation trap
- Mixing valve Certified to ASSE 1017
- Vents in Plastic PVC - CPVC - Stainless Steel – ULC S636 flexible polypropylene vent liner (chimney lining only)
- Vents up 85 equivalent feet (Combined Intake and Exhaust)
- 12 Year Limited Warranty
- Built In Low Water Cut – Off
- Manual Reset High Temperature Limit
- Dry Contact for Alarm Output

Optional Equipment

- Outdoor Sensor (Part # 7250P-319)
- 2" PVC Concentric Vent Kit (Part # KGAVT0501CVT)
- 3" PVC Concentric Vent Kit (Part # KGAVT0601CVT)
- 2" Stainless Steel Outside Termination Vent Kit (Part # V500)
- 3" Stainless Steel Outside Termination Vent Kit (Part # V1000)
- 4" Stainless Steel Outside Termination Vent Kit (Part # V3000)
- Condensate Neutralizer (Part # 7450P-212)
- PC Connection Cable w / Software (Part # 7350P-320)
- Alarm System to monitor any failure (Part # 7350P-602)



VERSA-HYDRO SOLAR WATER HEATER DIMENSIONS

| MODEL #* | GALLONS | A | B | C | D | E | F | G | H | J | K | L | M | N | O |
|-------------------------|---------|-----|---------|--------|-----|-----|-----|---------|---------|-----|---------|---------|--------|---------|---------|
| PHE130-80S/PHE199-80S | 80 | 72" | 64-1/2" | 5-3/4" | 23" | 34" | 24" | 37-1/2" | 36" | 27" | 64-1/2" | 9-3/4" | 5-1/4" | 64-3/4" | 48-3/4" |
| PHE130-119S/PHE199-119S | 119 | 74" | 66" | 7-1/4" | 27" | 37" | 24" | 37" | 35-1/2" | 26" | 66" | 11-1/2" | 6-3/4" | 66-1/4" | 32" |

* No suffix denotes natural gas and suffix "LP" denotes propane gas

VERSA-HYDRO SOLAR WATER HEATER SPECIFICATIONS

| MODEL #* | GALLONS | BTU'S | AIR INTAKE/EXHAUST VENT SIZE | WATER INLET/OUTLET SIZE | AUXILIARY CONN. | GAS LINE CONN. | SYSTEM RELIEF PIPE SIZE | SHIPPING WEIGHT |
|-------------------------|---------|---------|------------------------------|-------------------------|-----------------|----------------|-------------------------|-----------------|
| PHE130-80S/PHE199-80S | 80 | 130,000 | 2" | 1" NPT | 1" | 3/4" | 3/4" | 275 |
| | | 199,000 | 3" | | | | | |
| PHE130-119S/PHE199-119S | 119 | 130,000 | 2" | 1" NPT | 1" | 3/4" | 3/4" | 445 |
| | | 199,000 | 3" | | | | | |

* Suffix "NHX" denotes no solar heat exchanger (119 gallon only)