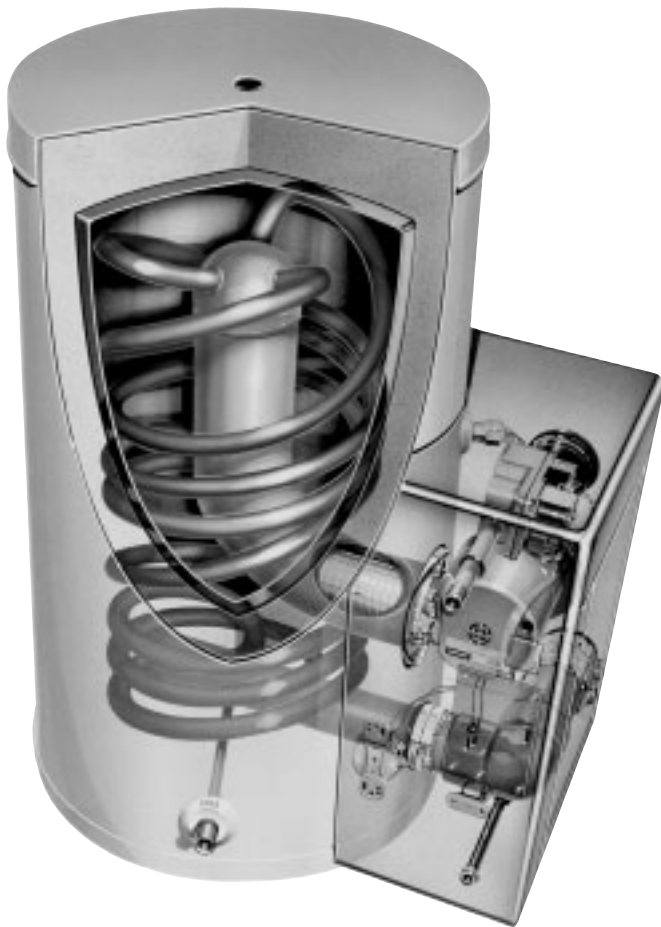


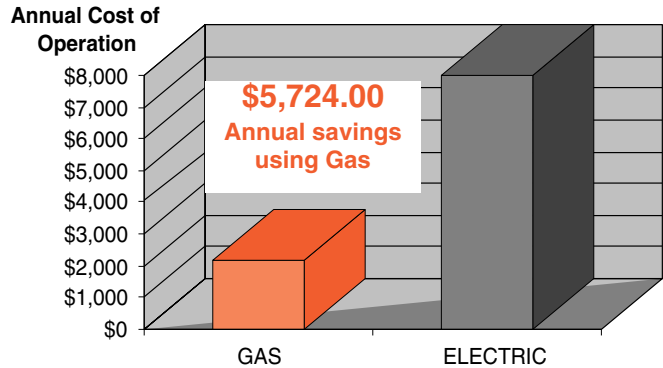
# VOYAGER SANITIZER (SA SERIES)

GAS FIRED BOOSTERS FOR COMMERCIAL APPLICATIONS



## SAVINGS:

73% SAVINGS USING GAS VS. ELECTRIC



(Savings may vary, based on individual usage requirements)

Analysis based on: 40 degree F. rise  
Rinse Requirement: 300 gal/hr  
Electric Demand: \$6.10/KW

Dishmachine use: 8 hrs/day  
Electricity: .054/kwh  
Natural Gas: .74/therm

## FEATURES:

- Available in 90,000; 130,000; 160,000; and 199,000 BTU inputs (45 gallon capacity) (natural or LP gas)
- Max. temp. set point 184 deg. F.
- Efficiency rating of 94%
- Zero clearance to any combustible surface
- Self-diagnostic electronic control with digital readout
- Less than 1/2 degree F. per hour heat loss
- Low emissions
- 316L stainless steel tank construction
- 90/10 Cupronickel heat exchanger
- Durable outer jacket with 2" CFC-free, environmentally-safe, water-blown foam insulation
- Direct vent with plastic pipe
- Front access cover - easy accessibility
- One yr. parts, 90 days labor, 3 yrs. tank warranty  
(Extended labor warranty available if tank is registered must complete registration sheet and return to factory)
- Standard VSBK-1200 Installation Kit Included

## ACCESSORIES

- Vertical/Horizontal Venting Termination Kit
- Condensate Neutralizer
- Propane ("LP") Conversion Kit

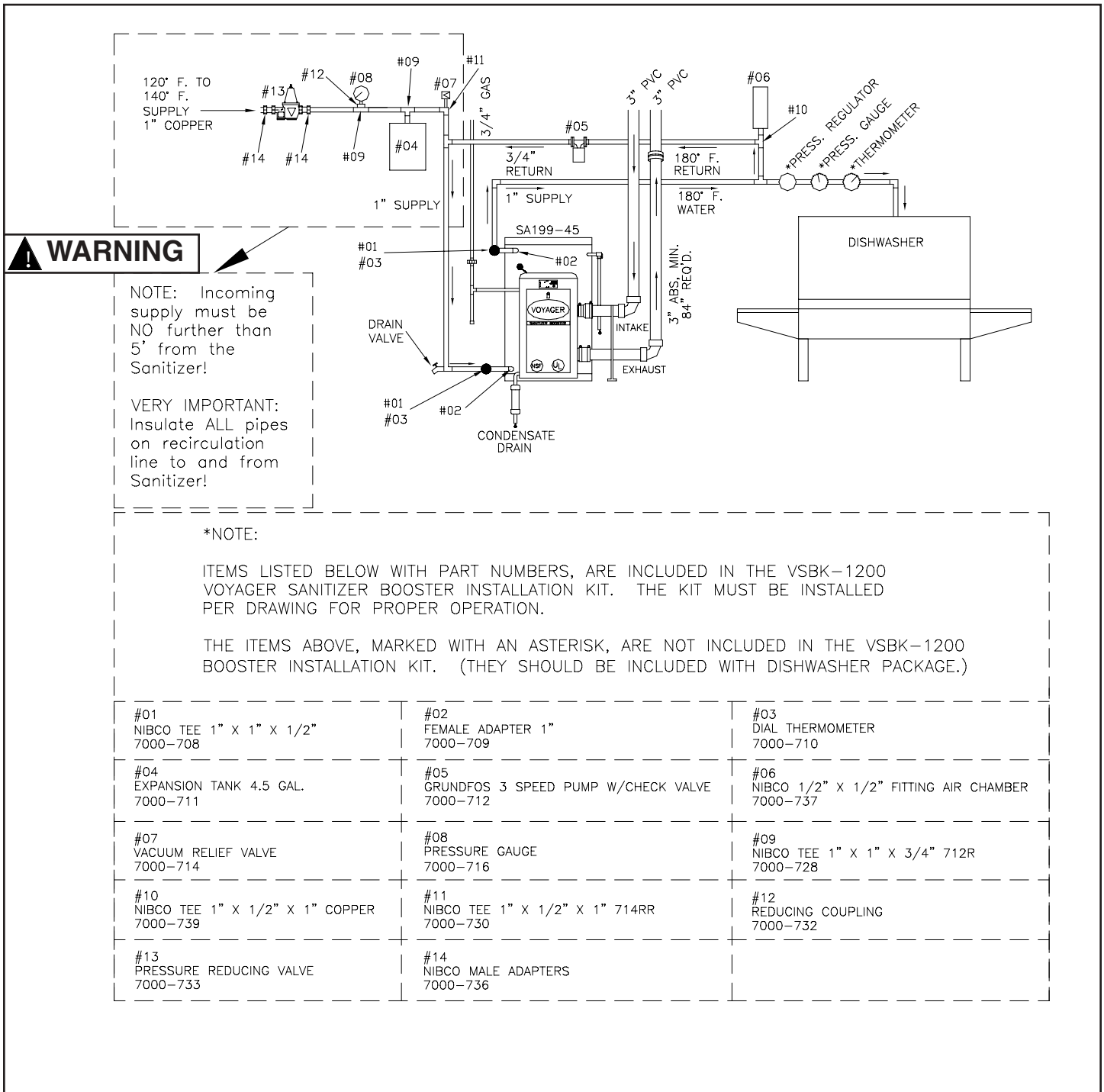
## RECOVERY RATING SPECIFICATIONS

MODEL	GALLON CAPACITY	INPUT BTU/HR. NATURAL & LP GAS		TEMPERATURE RISE IN DEGREES FAHRENHEIT										
				40	50	60	70	80	90	100	110	120	130	140
SA90-45	45	90,000	GPH	245	196	163	140	122	109	98	89	81	75	70
			GPM	4	3.2	2.7	2.3	2	1.8	1.6	1.4	1.3	1.2	1.1
SA130-45	45	130,000	GPH	354	283	236	202	177	157	141	128	118	109	101
			GPM	5.9	4.7	3.9	3.9	2.9	2.6	2.3	2.1	1.9	1.8	1.6
SA160-45	45	160,000	GPH	436	349	290	249	218	193	174	158	145	134	124
			GPM	7	5.8	4.8	4	3.6	3.2	2.9	2.6	2.4	2.2	2
SA199-45	45	199,000	GPH	545	436	363	311	272	242	218	198	181	167	155
			GPM	9	7	6	5	4.5	4	3.5	3.3	3	2.7	2.5

All booster models are 42" in height and are 23 1/4" in width.

# TYPICAL INSTALLATION

\*Each Voyager Sanitizer unit is shipped with a VSBK-1200 Booster Installation Kit .



## WARNING

NOTE: Incoming supply must be NO further than 5' from the Sanitizer!

VERY IMPORTANT: Insulate ALL pipes on recirculation line to and from Sanitizer!

\*NOTE:

ITEMS LISTED BELOW WITH PART NUMBERS, ARE INCLUDED IN THE VSBK-1200 VOYAGER SANITIZER BOOSTER INSTALLATION KIT. THE KIT MUST BE INSTALLED PER DRAWING FOR PROPER OPERATION.

THE ITEMS ABOVE, MARKED WITH AN ASTERISK, ARE NOT INCLUDED IN THE VSBK-1200 BOOSTER INSTALLATION KIT. (THEY SHOULD BE INCLUDED WITH DISHWASHER PACKAGE.)

#01 NIBCO TEE 1" X 1" X 1/2" 7000-708	#02 FEMALE ADAPTER 1" 7000-709	#03 DIAL THERMOMETER 7000-710
#04 EXPANSION TANK 4.5 GAL. 7000-711	#05 GRUNDFOS 3 SPEED PUMP W/CHECK VALVE 7000-712	#06 NIBCO 1/2" X 1/2" FITTING AIR CHAMBER 7000-737
#07 VACUUM RELIEF VALVE 7000-714	#08 PRESSURE GAUGE 7000-716	#09 NIBCO TEE 1" X 1" X 3/4" 712R 7000-728
#10 NIBCO TEE 1" X 1/2" X 1" COPPER 7000-739	#11 NIBCO TEE 1" X 1/2" X 1" 714RR 7000-730	#12 REDUCING COUPLING 7000-732
#13 PRESSURE REDUCING VALVE 7000-733	#14 NIBCO MALE ADAPTERS 7000-736	

Manufactured by:

**Heat Transfer Products, Inc.**  
P.O. Box 429, 120 Braley Road  
East Freetown, MA 02717

Sales, Service, & Technical Support  
1-508-763-8071, or outside of MA 1-800-323-9651

...or visit us at our website [WWW.HTPRODUCTS.COM](http://WWW.HTPRODUCTS.COM)

The manufacturer reserves the right to make product or literature changes at any time with or without notice.  
We are not responsible for typographical errors. For more product information, please consult the factory.

