

| DIMENSIONS |         |         |         |        |        |         |              |
|------------|---------|---------|---------|--------|--------|---------|--------------|
| MODEL      | "A"     | "B"     | "C"     | "D"    | "E"    | "F"     | INLET/OUTLET |
| SS-6M      | 14-1/4" | 16-1/2" | 9-1/4"  | 3-1/2" | 4-1/2" | 9-1/4"  | 1/2" NIPPLE  |
| SS-12M     | 16-1/4" | 19"     | 12-1/4" | 2"     | 3-1/2" | 12-1/4" | 1/2" NIPPLE  |
| SS-20M     | 19-1/4" | 27"     | 22"     | 4-3/4" | 4-3/4" | 22"     | 3/4" NIPPLE  |
| EV-6M      | 14-1/4" | 16-1/2" | 9-1/4"  | N/A    | 4-1/2" | 9-1/4"  | 1/2" NIPPLE  |
| EV-12M     | 16-1/4" | 19"     | 12-1/4" | N/A    | 3-1/2" | 12-1/4" | 1/2" NIPPLE  |
| EV-20M     | 19-1/4" | 27"     | 22"     | N/A    | 4-3/4" | 22"     | 3/4" NIPPLE  |

SHUT-OFF VALVE, DRAIN VALVE, CHECK VALVE SHOULD BE INSTALLED IN THE COLD WATER LINE.

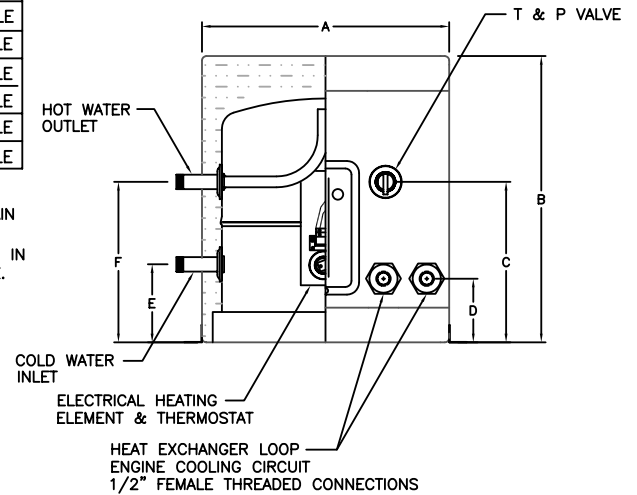


Figure 1

## ⚠ CAUTION

**HEATER MUST BE FILLED WITH WATER BEFORE POWER IS TURNED ON!**

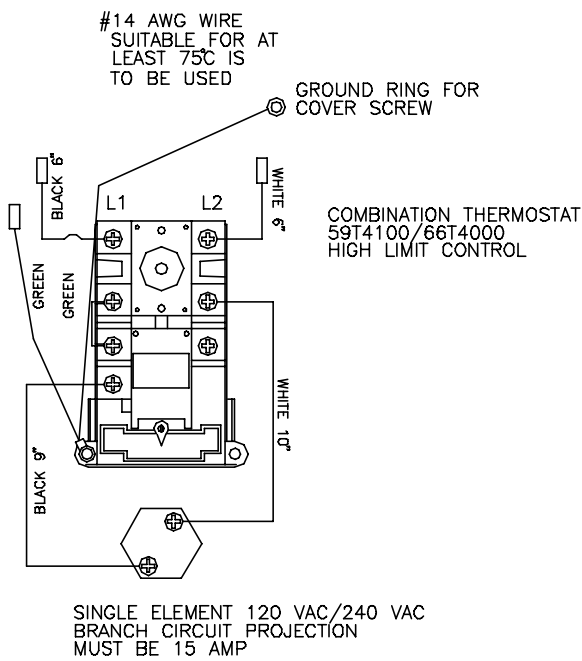
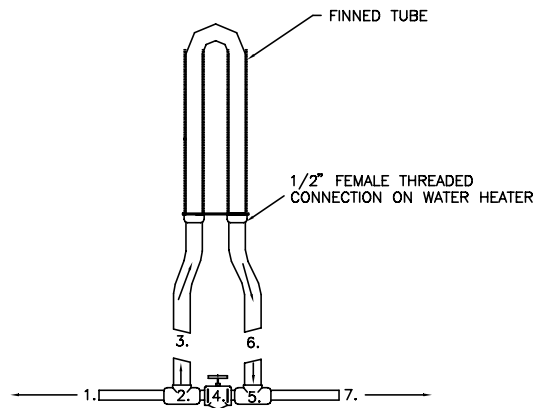


Figure 2

### HEAT EXCHANGER INSTALLATION



**LEGEND:**

1. HOTTEST WATER FROM ENGINE (FULL FLOW).
2. PIPE TEE: FULL FLOW ON RUN, 3/4" NPT ON BRANCH.
3. HOSE TO HOT WATER HEAT EXCHANGER.
4. GATE VALVE SIZED TO PERMIT FULL FLOW OF COOLANT.
5. PIPE TEE: FULL FLOW ON RUN, 3/4" NPT ON BRANCH.
6. HOSE FROM HOT WATER HEAT EXCHANGER.
7. FULL FLOW RETURN TO ENGINE COOLING SYSTEM.

Figure 3

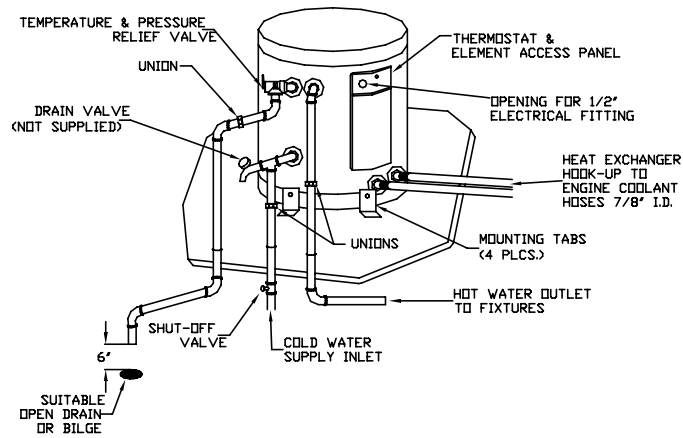


Figure 4

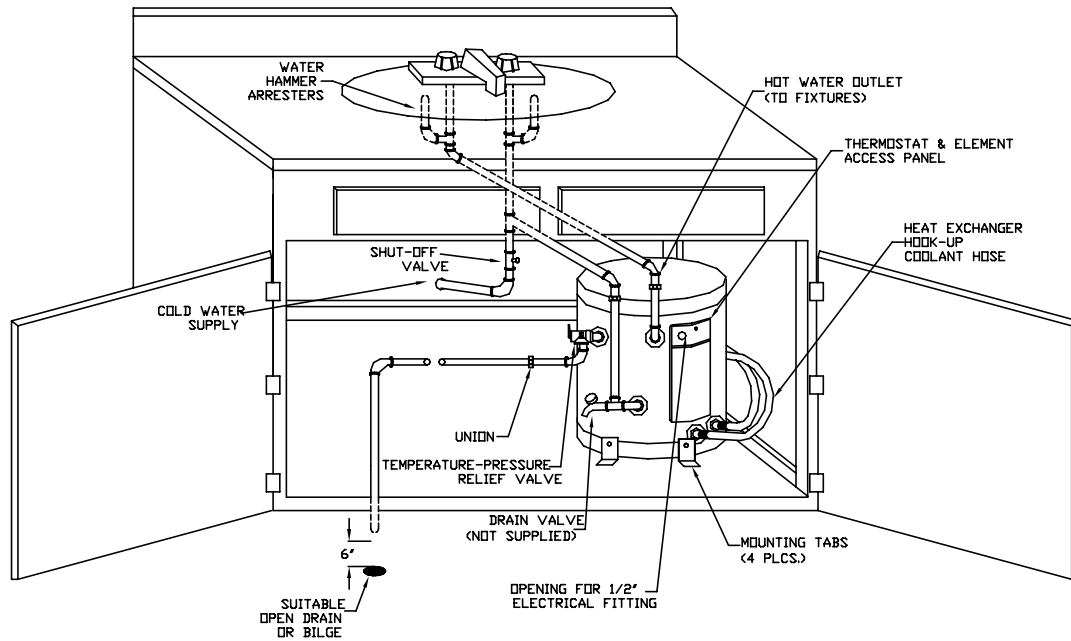


Figure 5

**HEAT TRANSFER PRODUCTS, INC.**

120 Braley Road • P.O. Box 429 • East Freetown • MA 02717 • (508) 763-8071 • 1-800-323-9651 (Outside MA) • Fax (508) 763-3769