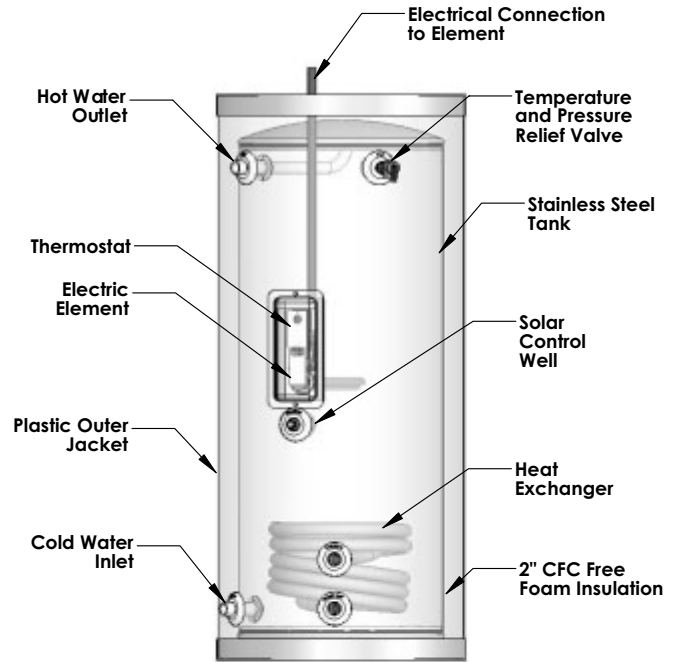
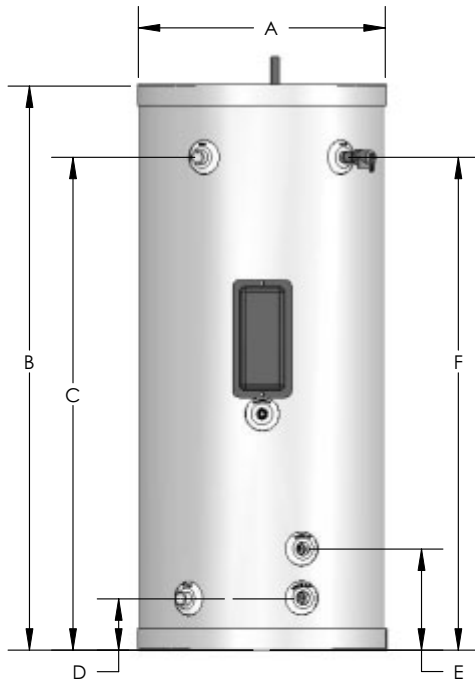


**PART 4: MAINTENANCE (CONT'D)**

**SUPERSTOR SE SERIES SOLAR WATER HEATER (with BACK-UP ELECTRIC ELEMENT)**



SUPERSTOR SOLAR WATER HEATER DIMENSIONS							
MODEL #	GAL.	DIMENSIONS					
		A	B	C	D	E	F
SSU-60SE	60	23"	52"	46"	5"	9-1/4"	46"
*SSU-80SE	80	23"	72"	64-1/2"	5"	9-1/4"	64-1/2"
*SSU-119SE	119	27"	74"	66-1/2"	7-1/2"	11-1/4"	66-1/2"

SUPERSTOR SOLAR WATER HEATER SPECS						
MODEL #	GAL.	HEAT EXCHANGER OUTLET SIZE	INLET/OUTLET SIZE	DRY WEIGHT	WET WEIGHT	SHIPPING WEIGHT (lbs)
SSU-60SE	60	1" NPT	1" NPT	90	492	115
*SSU-80SE	80	1" NPT	1" NPT	121	656	146
*SSU-119SE	119	1" NPT	1" NPT	200	1722	215

\* DW SOLAR COIL MODELS SPECIAL ORDER, CONSULT FACTORY

SUPERSTOR SOLAR SE SERIES							
MODEL	SOLAR HX VOLUME GALLONS	WATER VOLUME OF BACK UP	MAX. OPERATING PRESSURE OF COIL	RECOVERY OF BACK UP IN MINUTES		FIRST DRAW*	
				65° RISE	90° RISE	65° RISE	90° RISE
SSU-60SE	1 GAL	35 GAL	150 PSI	74 MIN	102 MIN	40 GAL	28 GAL
SSU-80SE	1 GAL	49 GAL	150 PSI	104 MIN	143 MIN	60 GAL	40 GAL
SSU-119E	1 GAL	64 GAL	150 PSI	135 MIN	187 MIN	90 GAL	60 GAL

\* AMOUNT OF WATER DRAWN OUT OF STORAGE TANK WITHOUT ANY ENERGY INPUT

All tank dimensions are approximate. Heat Transfer reserves the right to make product changes or updates without notice. Heat Transfer will not be held liable for typographical errors in literature. For questions, please consult the factory.

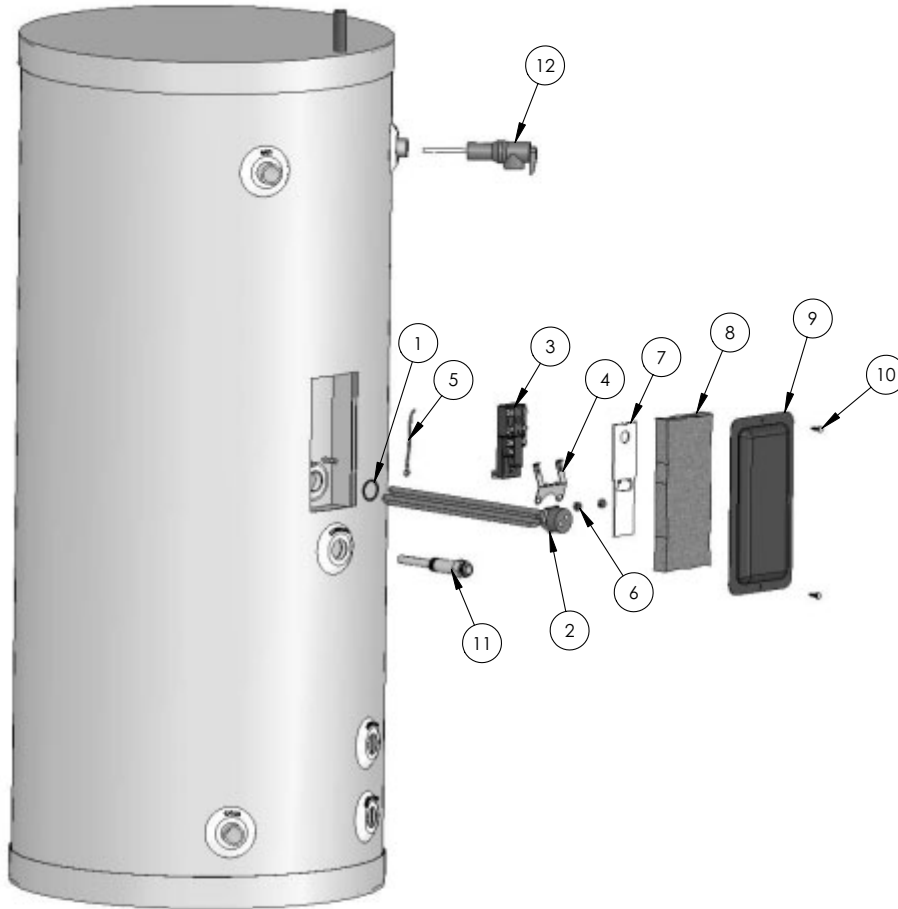
**Fig. 4-2**

LP-195  
REV. 3/27/08

**PART 4: MAINTENANCE (CONT'D)**

**SUPERSTOR SOLAR SE MODELS  
(w/Electric Back-up)**

PARTS BREAKDOWN



Item No	Replacement Part #	Description	QTY.
1	N/A	O-RING - ELECTRIC ELEMENT (#213 EDPM)	1
2*	E1001	ELECTRIC ELEMENT (W/O-RING)	1
3	TD1015	UPPER THERMOSTAT CONTROL	1
4	6060P-633	THERMODISC MOUNTING CLIP	1
5	6060P-630	GREEN GROUND WIRE W/RING	1
6	6060P-632	5/16-18 HEX NUT - THERMODISC MOUNTING CLIP	2
7	6060P-636	PLASTIC PROTECTIVE COVER	1
8	6060P-635	MINERAL WOOL INSULATION	1
9	6060P-187	ELECTRICAL ENCLOSURE COVER	1
10	6075P-006	#8 X 3/4" SELF TAPPING SCREW - ELECTRICAL ENCLOSURE COVER	2
11	PMW-3SENP-1	STAINLESS STEEL CONTROL WELL	1
12	TP1000	3/4" RELIEF VALVE	1

**\*CAUTION: If the heating element needs replacement, it is VERY important to use the same voltage , wattage and construction. This element must be stainless steel and the hex plug be made of brass. This replacement part is available from the manufacturer and should NOT be purchased from outside sources.**

**Fig. 4-3**