



Hardware Instructions for SS Series Collectors: 8600P-012 (MT-FM Flush Mount)



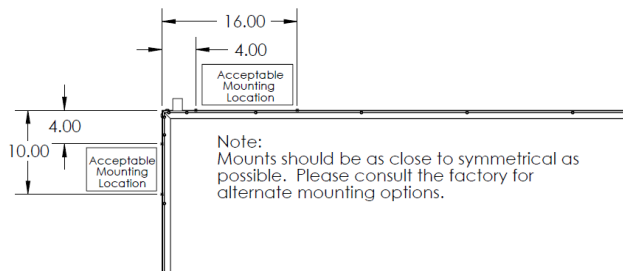
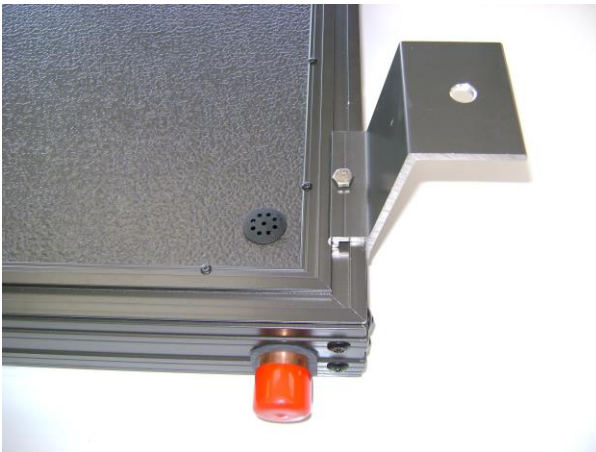
The Flush Mount hardware is shipped in sets of four, enough hardware to secure one collector.

Each set contains:

- (4) 8600P-012 MT-FM Flush Mounts
- (1) 1/4 - 20 Stainless Steel Set Screws, pre-installed per flush mount

Installation Instructions

- First loosen the set crew fully. The Flush Mount will engage into the “Quick Lock” frame rail.
- Slide the Flush Mount to desired location
- Tighten set screw with a 7/16” wrench to a maximum of 10 foot pounds to lock the Flush Mount into position.



The Flush Mounts can be fastened to Uni-Strut™ or directly to the asphalt roof using the appropriate fasteners and sealant. Use diagram for proper placement of flush mounts

HTP, Inc.

272 Duchaine Blvd • New Bedford, MA 02745 • Ph 508-763-8071 Fax 508-763-3769