



Versa-Hydro Solar Combination Hydronic Appliance Submittal Sheet

JOB NAME:

LOCATION:

ARCH./ENGR.:

WHOLESALE:

MECH. CONTRACTOR:

MODEL NUMBER:

TYPE OF GAS:

BTU/HR INPUT LOW – HIGH FIRE:

NOTES:

Tank/Combustion Heat Exchanger

- Storage Tank 316L Stainless Steel Construction
- 90/10 Copper Nickel Heat Exchanger
- Front service access to combustion chamber and burner

Combustion System

- Modulating burner based on heat demand
- Up to 5 to 1 turn down ratio
- 96% Thermal Efficiency (All Models)
- 98% Combustion Efficiency
- High Grade Inconel Burner
- Spark Ignition
- Models Available for Natural or LP Gas

Hydronic Heating Module

- Pre-Plumbed Hydronic Module with Brazed Plate Heat Exchanger.
- System Line Connection of 1" NPT
- Working System Pressure of 15 PSI
- Pressure Relief Valve designed to relieve pressure Greater than 30 PSI (Higher relief valve capacities Available)

Control System

- Total System Control – Monitors Outdoor Temperature -Tank Temperature and Heating Module Outlet Temperature to match system design
- Password Protected
- Outdoor reset with Indirect Priority
- Modulating Pump Control on Heating Module
- 24 Volt monitoring

Solar System

- Additional Solar Heat Exchanger

Additional Features

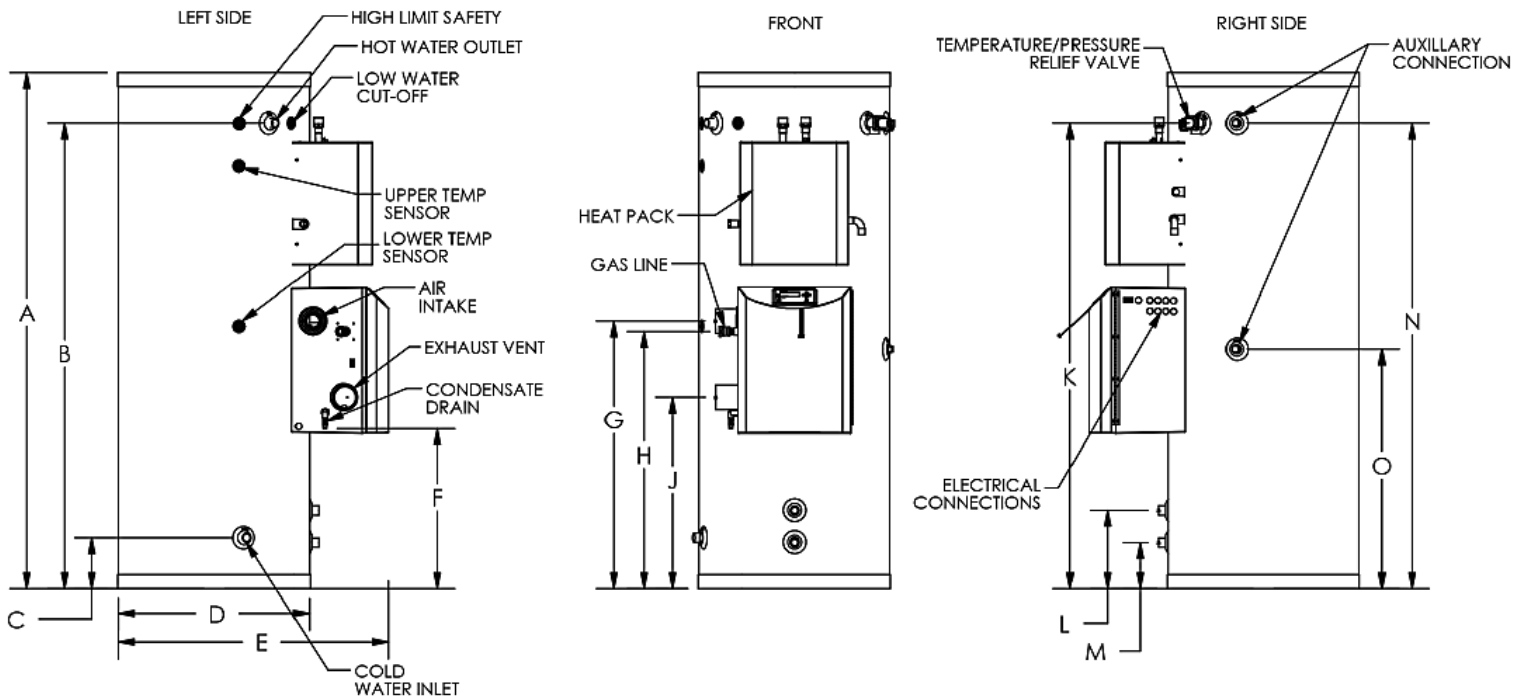
- Built in Condensation trap
- Mixing valve Certified to ASSE 1017
- Vents in Plastic PVC - CPVC - Stainless Steel – ULC S636 flexible polypropylene vent liner (chimney lining only)
- 12 Year Limited Warranty
- Built In Low Water Cut – Off
- Manual Reset High Temperature Limit
- Dry Contact for Alarm Output
- Lead Free Compliant, as required by the Safe Drinking Water Act, Section 1417

Certifications

- ETL Listed
- Low NOx emissions – SCAQMD Certified

Optional Equipment

- Outdoor Sensor (Part # 7250P-319)
- 2" PVC Concentric Vent Kit (Part # KGAVT0501CVT)
- 3" PVC Concentric Vent Kit (Part # KGAVT0601CVT)
- 2" Stainless Steel Outside Termination Vent Kit (Part # V500)
- 3" Stainless Steel Outside Termination Vent Kit (Part # V1000)
- 4" Stainless Steel Outside Termination Vent Kit (Part # V3000)
- Condensate Neutralizer (Part # 7450P-212)
- PC Connection Cable w / Software (Part # 7250P-738)
- Alarm System to monitor any failure (Part # 7350P-602)
- Solar Kit (for use with Versa Hydro Control) (Part # 7100P-220)



VERSA-HYDRO SOLAR WATER HEATER DIMENSIONS

MODEL #*	GALLONS	A	B	C	D	E	F	G	H	J	K	L	M	N	O
PHE130-80S/PHE199-80S	80	72"	64-1/2"	5-3/4"	23"	34"	24"	37-1/2"	36"	27"	64-1/2"	9-3/4"	5-1/4"	64-3/4"	48-3/4"
PHE130-119S/PHE199-119S	119	74"	66"	7-1/4"	27"	37"	24"	37"	35-1/2"	26"	66"	11-1/2"	6-3/4"	66-1/4"	32"

VERSA-HYDRO SOLAR WATER HEATER SPECIFICATIONS

MODEL #*	GALLONS	BTU'S	AIR INTAKE/EXHAUST VENT SIZE	WATER INLET/OUTLET SIZE	AUXILIARY CONN.	GAS LINE CONN.	SYSTEM RELIEF PIPE SIZE	SHIPPING WEIGHT
PHE130-80S/PHE199-80S	80	130,000	2"	1" NPT	1" FNPT	3/4"	3/4"	275
		199,000	3"					
PHE130-119S/PHE199-119S	119	130,000	2"	1" NPT	1" FNPT	3/4"	3/4"	445
		199,000	3"					

* No suffix denotes natural gas and suffix "LP" denotes propane gas
 * Suffix "NHX" denotes no solar heat exchanger (119 gallon only)