



## Everlast Electric Water Heaters

**JOB NAME:**

**LOCATION:**

**ARCH. / ENGR.:**

**WHOLESALER:**

**MECH. CONTRACTOR:**

**MODEL NUMBER:**

**ELECTRICAL SPECIFICATIONS:**

**NOTES:**

### Stainless Steel Tank

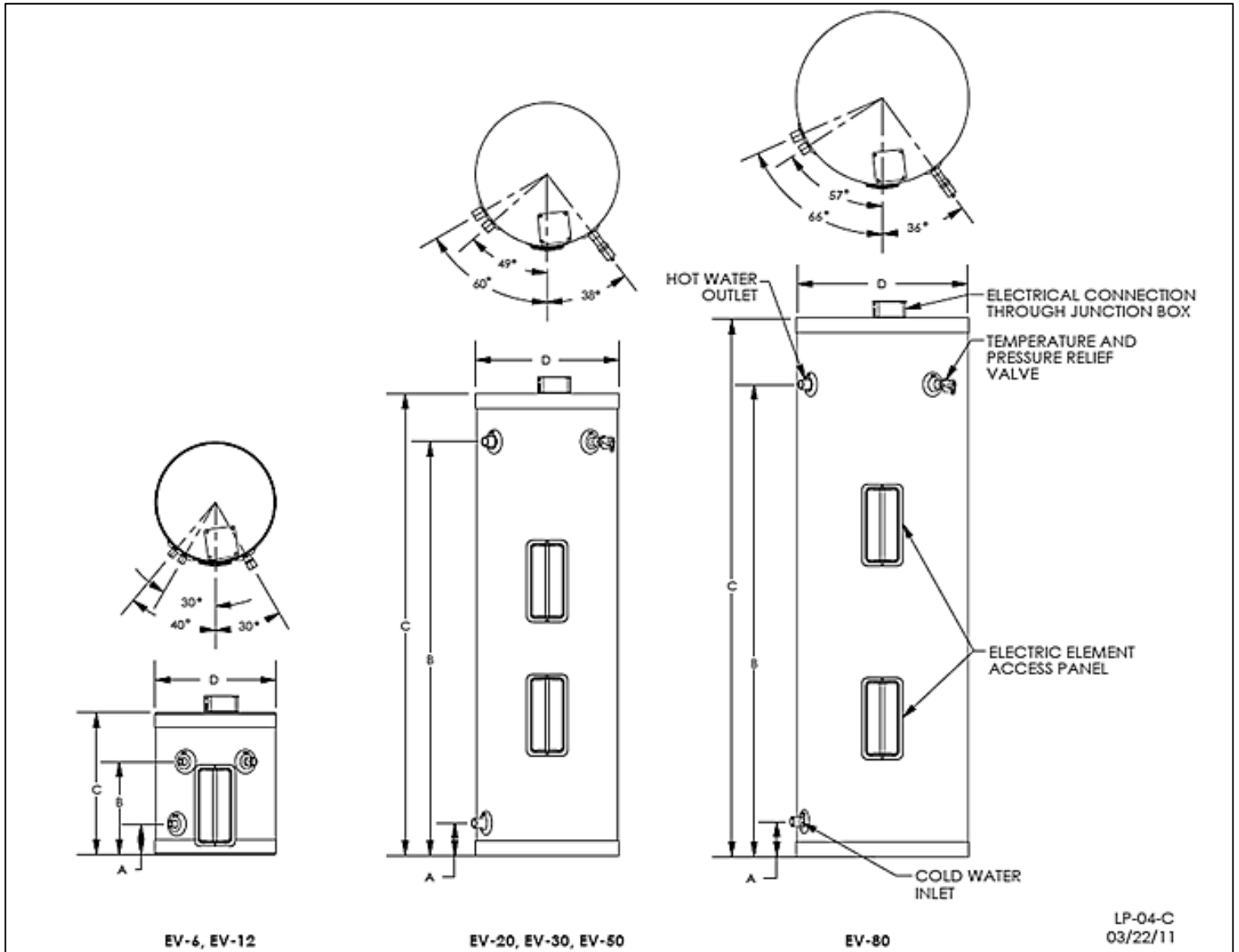
- 316L stainless steel tank construction tolerates high temperatures and offers superior corrosion resistance
- Insulated with environmentally safe, CFC free, water-blown, extra thick foam insulation
- Outer shell constructed of silver finished durable plastic for rust and impact resistance
- Hot water outlet connection provides a thermo trap, reducing the amount of energy normally lost with a top outlet connection
- Cold water inlet directs cold water to the heating element, minimizing the mixing of cold and heated water and providing long draws of hot water
- Stainless steel inlet and outlet domestic connections for all models

### Additional Features

- Limited warranty – Lifetime residential (tank) and 10 years commercial (tank) coverage – 1 year parts coverage (residential and commercial)
- NSF Listed Components
- Included Temperature and Pressure Relief Valve
- Lead Free Compliant, as required by the Safe Drinking Water Act, Section 1417

### Electric Element

- Stainless steel incoloy electric elements with a stainless steel screw base – reduces the chance of element burnout and provides longer service life versus conventional elements
- Immersed elements provide direct, efficient heat transfer
- 6, 12, and 20 gallon models – Available with Single 1500 or 3000 W Elements at 120 V operation only
- 30, 50, and 80 gallon models – Available with Dual 3000 or 4500 W Elements in 208, 240, or 277 V simultaneous or non-simultaneous operation
- Fully automatic surface mounted thermostat and high limit controls provide adequate temperature control and overheat protection – manual reset cutoff
- Adjustable temperature range



EV-6, EV-12

EV-20, EV-30, EV-50

EV-80

LP-04-C  
03/22/11

MODEL	GAL. CAP.	A	B	C	D	INLET / OUTLET	APPROX. SHIPPING WEIGHT (LBS.)
EV-6*	6	4 ½"	9 ¾"	16 ½"	14 ¼"	½"	19
EV-12*	12	3 ½"	12 ¼"	19"	16 ¼"	½"	26
EV-20*	20	4 ¾"	22"	27"	19 ¼"	¾"	41
EV-30**	30	4 ¾"	34 ¼"	39 ½"	19 ¼"	¾"	55
EV-50**	50	4 ¾"	56"	63"	19 ¼"	¾"	90
EV-80**	80	5 ½"	64 ¼"	72"	23 ¼"	1"	132

\* 6, 12, and 20 gallon models – Available with Single 1500 or 3000 W Elements at 120 V operation only

\*\* 30, 50, and 80 gallon models – Available with Dual 3000 or 4500 W Elements in 208, 240, or 277 V simultaneous or non-simultaneous operation

WATTAGE	RECOVERY				
	GPH TEMPERATURE RISE IN °F				
60	60	80	90	100	120
1500	10	8	7	6	5
3000	21	15	14	12	10
4500	31	23	21	19	15

WATTAGE LIMITATIONS FOR SIMULTANEOUS OPERATION	VOLTAGE				WATTAGE LIMITATIONS FOR NON-SIMULTANEOUS OPERATION	VOLTAGE			
	120	208	240	277		120	208	240	277
					1500	YES	NO	NO	NO
2 X 3000	NO	YES	YES	YES	3000	YES	YES	YES	YES
2 X 4500	NO	YES	YES	YES	4500	NO	YES	YES	YES