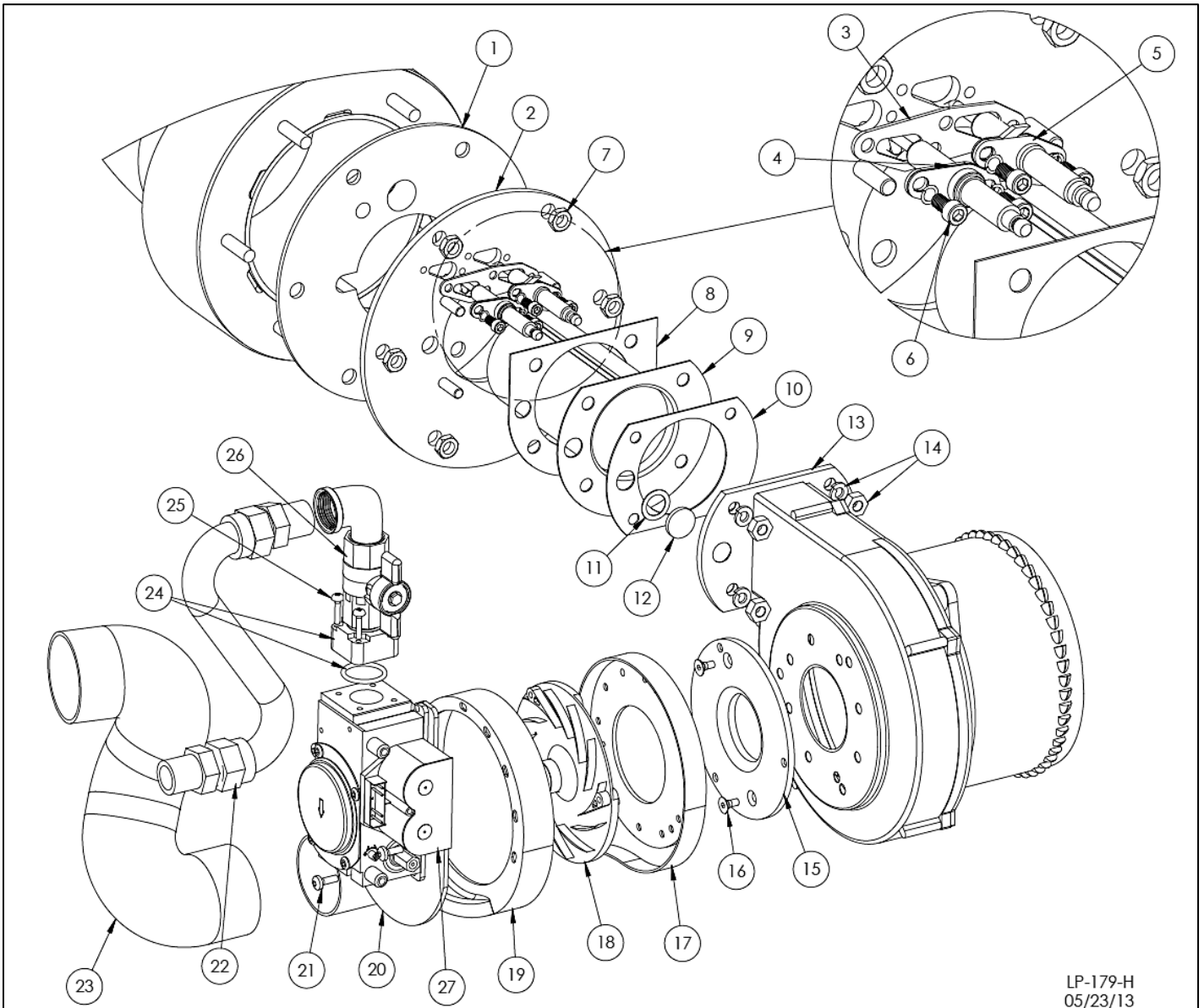


Figure 27 – LP-179-J

Item #	Description	Replacement Part #
1	LOW WATER CUT-OFF SENSOR	7000P-852-1
2	HIGH TEMP SAFETY SWITCH	7100P-006
3	UPPER TEMPERATURE SENSOR	7100P-004
4	LOWER TEMPERATURE SENSOR	7100P-005
5	TEMPERATURE AND PRESSURE RELIEF VALVE 100 BTU	TP1900
	TEMPERATURE AND PRESSURE RELIEF VALVE 130/160/199 BTU	TP1400
6	BLOCKED VENT PRESSURE SWITCH	7250P-150
7	CONTROL BOARD	7450P-122
8	120 VOLT WIRE HARNESS (LOCATION SHOWN)	7100P-272
9	LOW VOLTAGE WIRE HARNESS (LOCATION SHOWN)	7100P-273
10	CONTROL DISPLAY	7350P-009
11	S.S. HOSE BARB	7250P-154
12	HIGH FLUE TEMP SWITCH	VS210
13	CONDENSATE HOSE	7100P-121
14	HOSE CLAMP - CONDENSATE HOSE	7250P-215
15	SENSOR WIRE HARNESS (ATTACHES TO ITEM #9)	7100P-274
16	2" COUPLING - AIR INLET (100/130 BTU)	7100P-114
	3" COUPLING - AIR INLET (160/199 BTU)	7100P-103
17	NUT - AIR INLET COUPLING	7100P-104
18	OUTDOOR SENSOR (NOT SHOWN)	7250P-319



LP-179-H
05/23/13

Item #	Description	Replacement Part #
1	GASKET - MOUNTING PLATE	7100P-139
2	MOUNTING PLATE	7100P-007
3	GASKET - PROBES	7100P-155
4	FLAME RECTIFICATION PROBE (w/GASKET)	7100P-082
5	IGNITOR ELECTRODE (w/GASKET)	7100P-124
6	10-32 X 3/8 SCREWS/#10 LOCK WASHERS	N/A
7	NUTS - 5/16-18	N/A
8	GASKET - BURNER MOUNTING FLANGE	7100P-152
9	BURNER - 100-130K BTU	7100P-316
	BURNER - 160-199K BTU	7100P-317
10	GASKET - BURNER OUTLET	7000P-361
11	GASKET - SIGHT GLASS	7100P-105
12	SIGHT GLASS	G2000
13	COMBUSTION BLOWER (w/GASKET, SIGHT GLASS)	7100P-015
	COMBUSTION BLOWER (w/GASKET, SIGHT GLASS)199K BTU ONLY	7100P-350
14	1/4-20 BRASS NUTS/1/4 LOCK WASHERS	7100P-268

Item #	Description	Replacement Part #
15	ADAPTER PLATE	7250P-644
16	FLAT HEAD SCREW - ADAPTER PLATE	7100P-045
17	AIR INTAKE ADAPTER - BLOWER SIDE	7500P-185
18	SWIRL PLATE - BLACK (100/130 BTU)	7100P-042
	SWIRL PLATE - WHITE (160/199 BTU)	7500P-092
19	AIR INTAKE ADAPTER - VALVE SIDE	7500P-184
20	GAS VALVE (100/130 BTU)	7000P-862
	GAS VALVE (160/199 BTU)	7000P-863
21	SCREWS - GAS VALVE	7100P-046
22	1/2" FLARE X 1/2" NPT FLEX HOSE	7100P-140
23	TUBE - AIR INLET	7500P-189
24	GAS VALVE ADAPTER (w/O-RING)	7250P-454
25	SCREWS - M4 X 20MM GAS VALVE ADAPTER	7250P-717
26	GAS SHUT-OFF VALVE	7250P-140
27	24VAC GAS VALVE COIL ONLY - GREY	7350P-624

Figure 28 – LP-179-H